

Vacuum chamber transfer

Koji Nagano

- Vacuum chamber was transferred from NAOJ to Ando Lab (B2), Hongo campus.

NAOJ



NAOJ



Hongo



Hongo



We used BISHAMON
to move the chamber
in Hongo campus.

Hongo

BISHAMON is behind this.

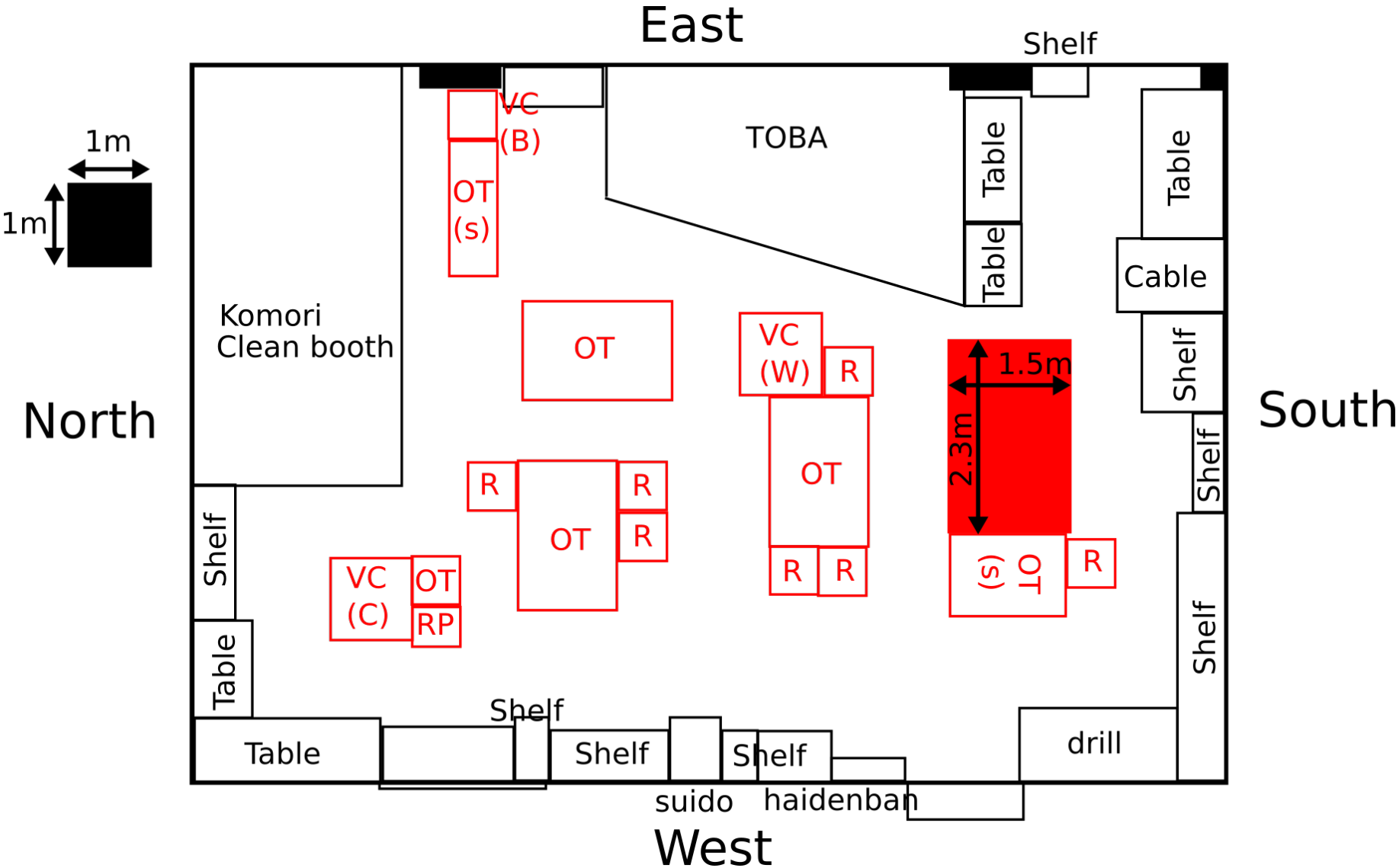


Hongo



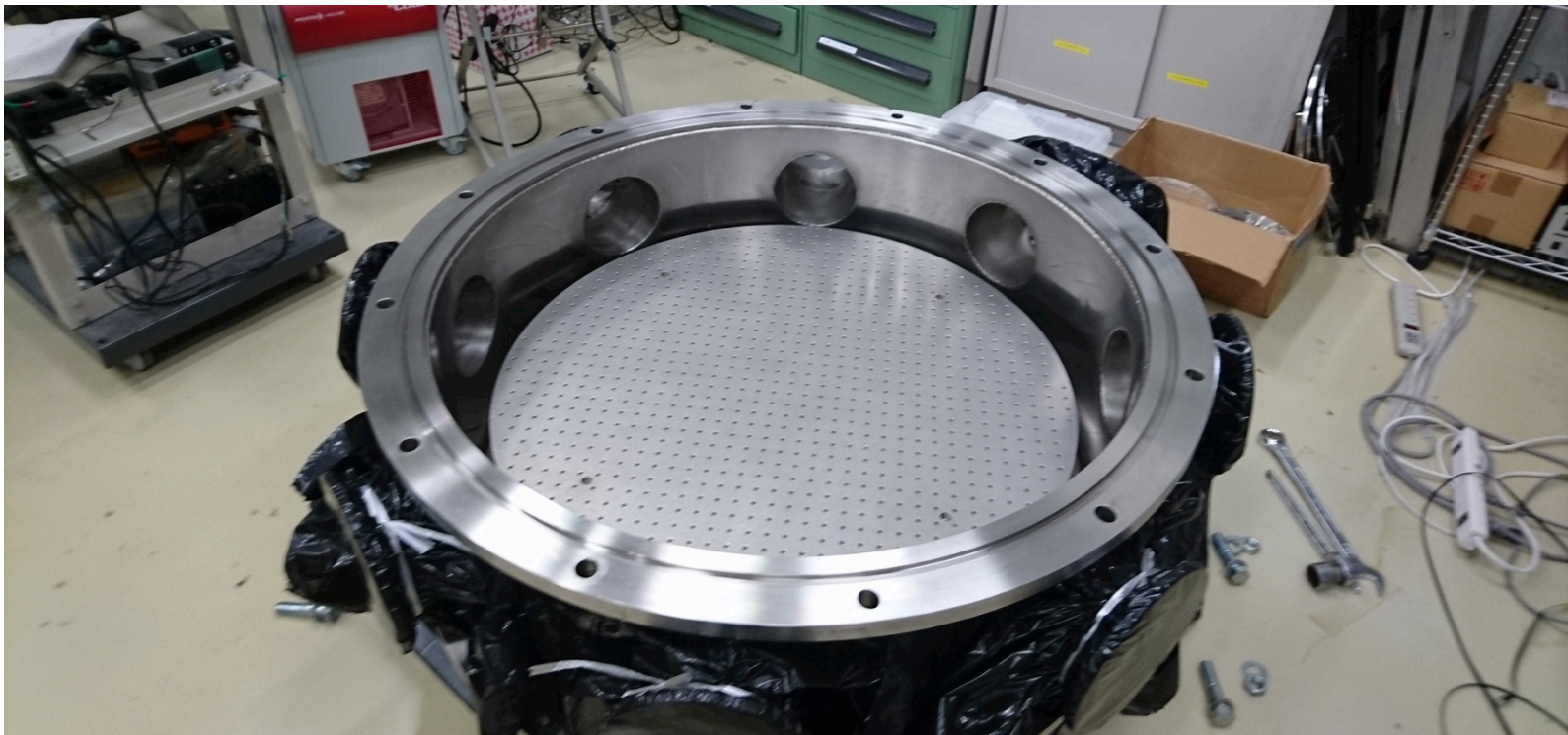
Flanges transferred from NAOJ with the chamber.

Lab layout



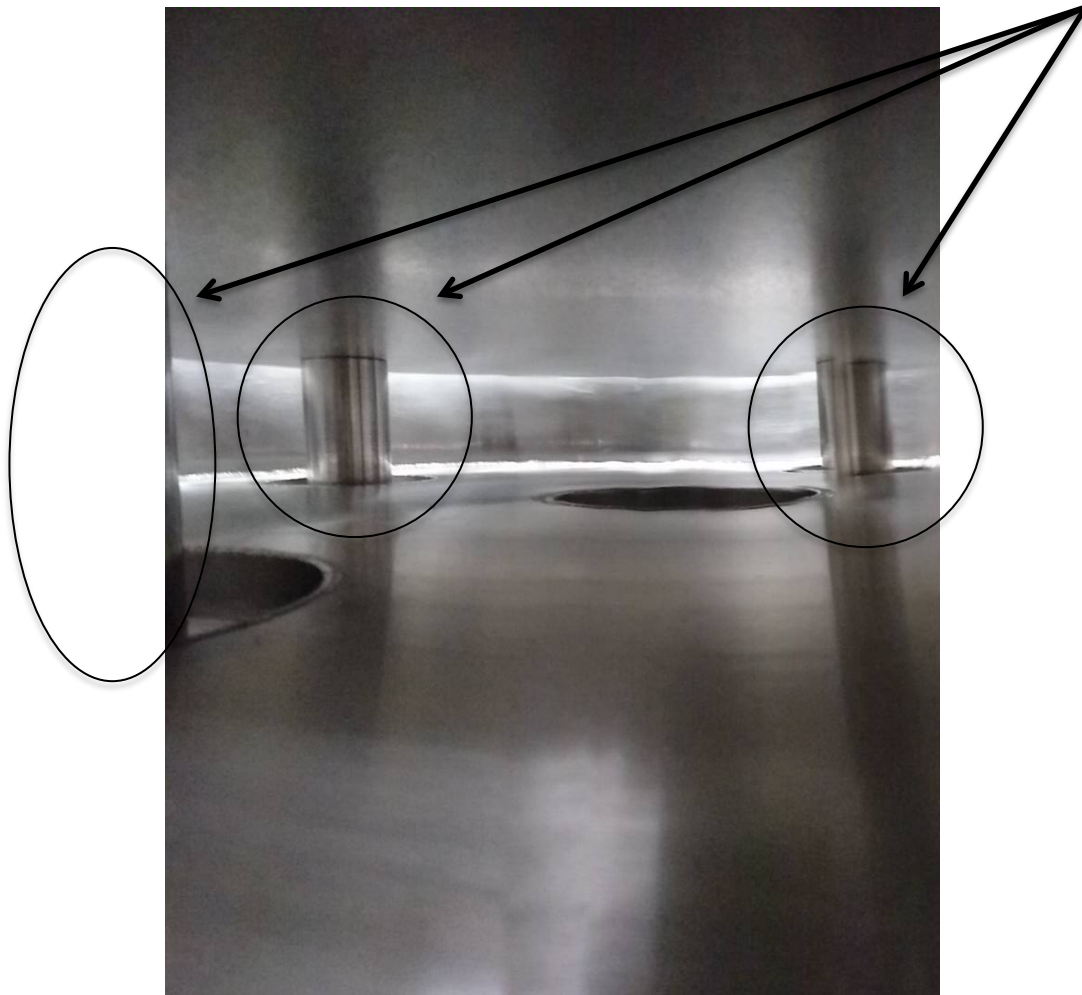
Chamber condition

- It is not so dirty but not so beautiful.
 - It may be OK.
- It has an optical bench.



Chamber condition

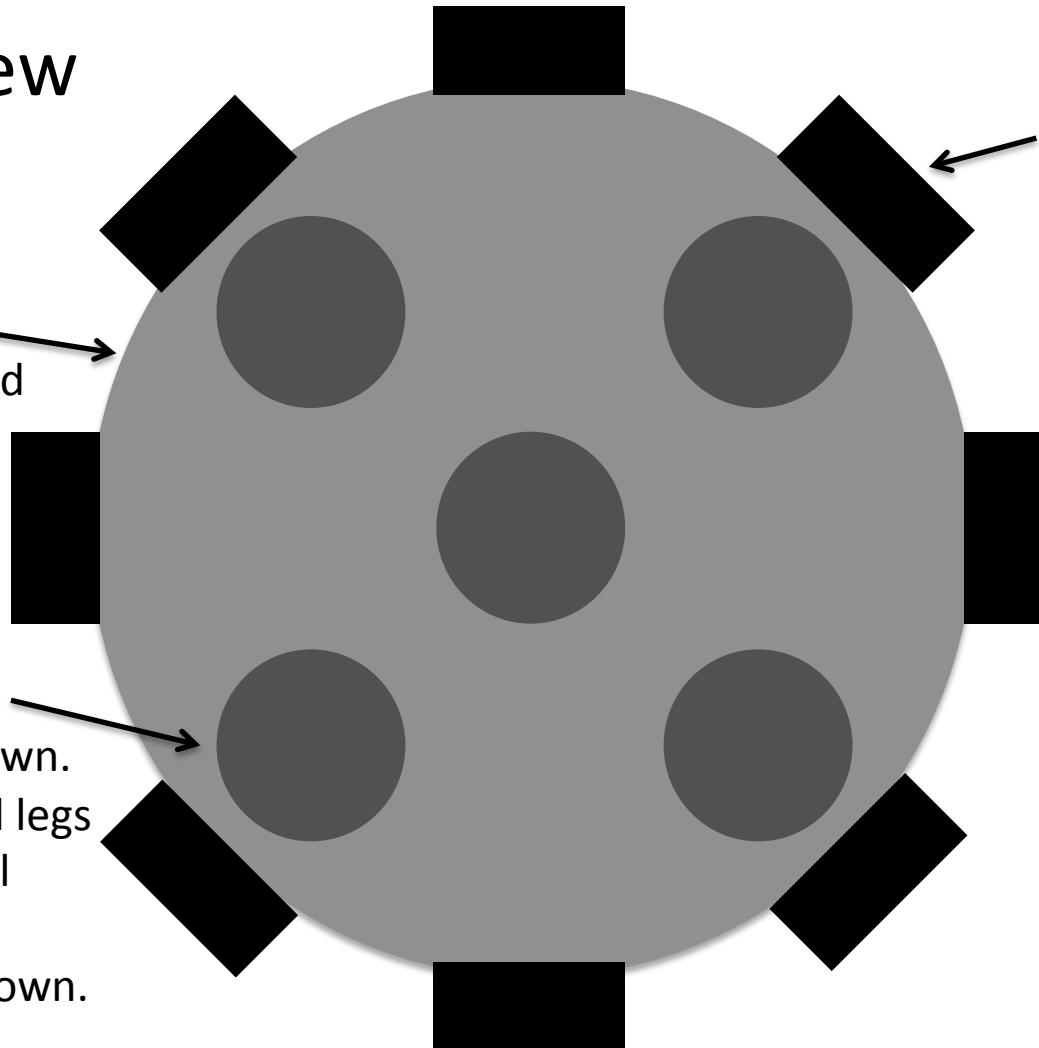
- Optical bench is supported by 4 metal legs.



Chamber schematic

- Top View

Top flange size has not been measured. However, we had a compatible O-ring.



8 flanges on side. Flange size is JIS VG 150.

We need to buy new O-rings for these flanges although we may have a few.

5 flanges on bottom. Flange size is not known. 4 of them have metal legs to support the optical bench. Sealing way is not known.

To do

- At first, check if the chamber is still “VACUUM” chamber.
- If it is OK, we will design whole vacuum system (bulbs, pumps, flanges, table for chamber, and so on).